

LANDSCAPE ASSESSMENT OF A MENA HEALTHCARE DATABASE FOR USE IN HEALTH ECONOMICS MODELING

Maskineh C¹, Becker R², Kosremelli Asmar M³, Bekhazi H⁴, Sleilaty G³

¹CCHO-SAL, Beirut, Lebanon, ²Russell Becker Consulting, Chicago, USA, ³Institut Supérieur de Santé Publique, Beirut, Lebanon, ⁴GlobeMed Lebanon, Sin El Fil, Lebanon



OBJECTIVE

Real World Evidence (RWE) continues to be a fundamental tool that touches all stakeholders across the entire healthcare system, guides their decision, and contributes to generating useful economic modeling. The MENA region lacks data necessary for economic modeling. To fill the existing gap, the Centre for Clinical, Health Economics and Outcome Research (CCHO), GlobeMed and Higher Institute of Public Health (ISSP) of Saint-Joseph University (USJ) of Beirut are embarking to create a data warehouse reflecting the real world of treatment patterns and costs.

METHOD

A data mapping exercise was done to assess the capabilities of GlobeMed based longitudinal data as a source to cover data needs in health economic modeling. Data availability was assessed in a matrix framework. The inputs used were mapped into the following economic modeling categories: treatment patterns, epidemiology, patient health metrics, costs, resource use, and disease status.

RESULTS

GlobeMed database has over 22 years of longitudinal data. Its data claims are continuously updated and growing at 10% per year. The data covers 12 different markets in the Middle-Eastern and African territories: Lebanon, Ivory Coast, Syria, Saudi Arabia, Kuwait, Qatar, UAE, Bahrain, Jordan, Palestine, Egypt, and Nigeria (Figure2). GlobeMed has over 800,000 unique patient submissions, including major therapeutic areas such as diabetes (1.2 million patients), oncology (114,000 patients) and respiratory patients (1.4 million patients). Moreover, for inputs for costs, GlobeMed captures hospital, pharmacy and outpatient data (Figure1). GlobeMed database can be used efficiently to generate patient treatment patterns, market opportunity assessment, medication adherence, orphan drugs & conditions, burden of illness and cost of resource utilization(Figure 3).

FIGURE 1

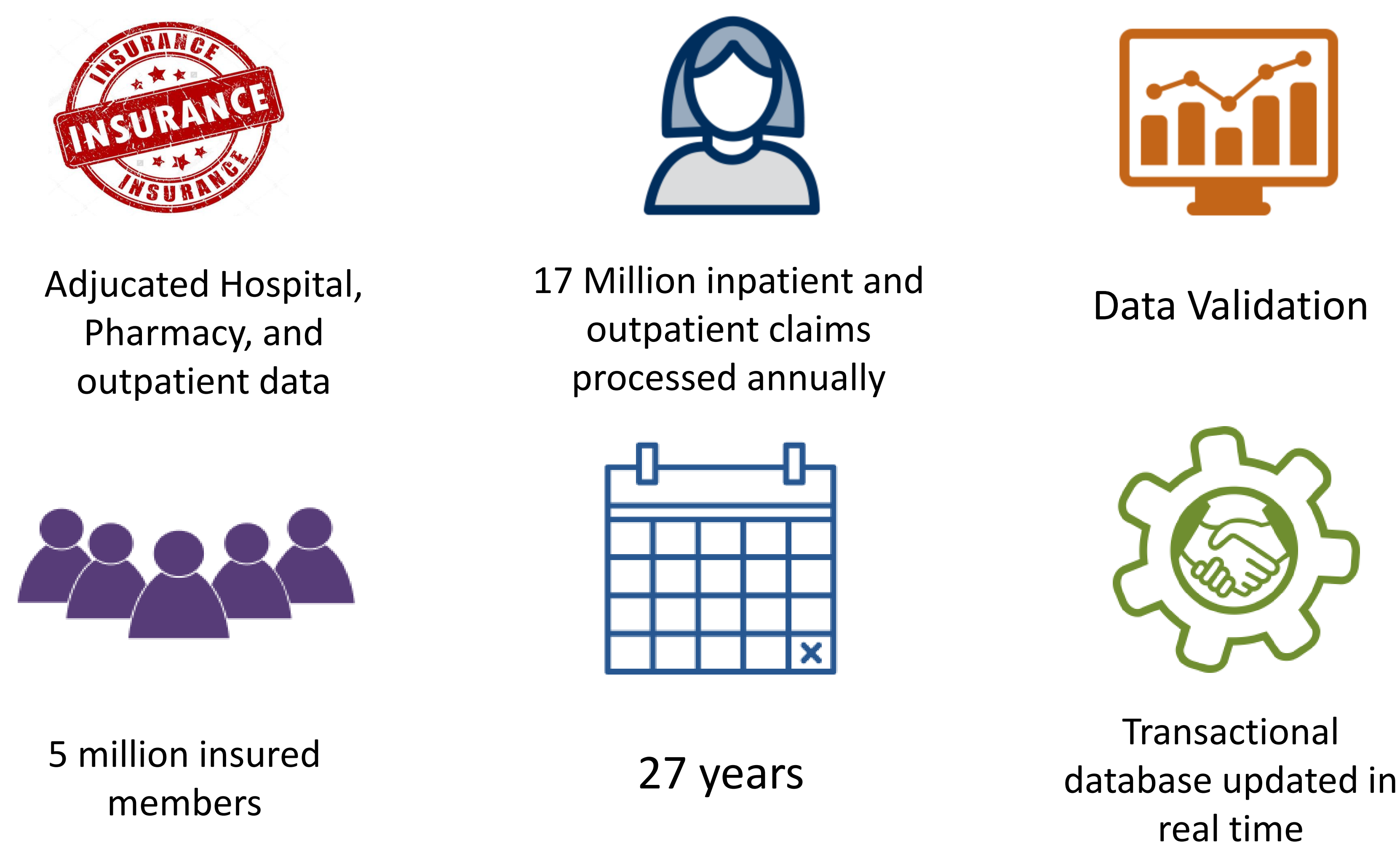


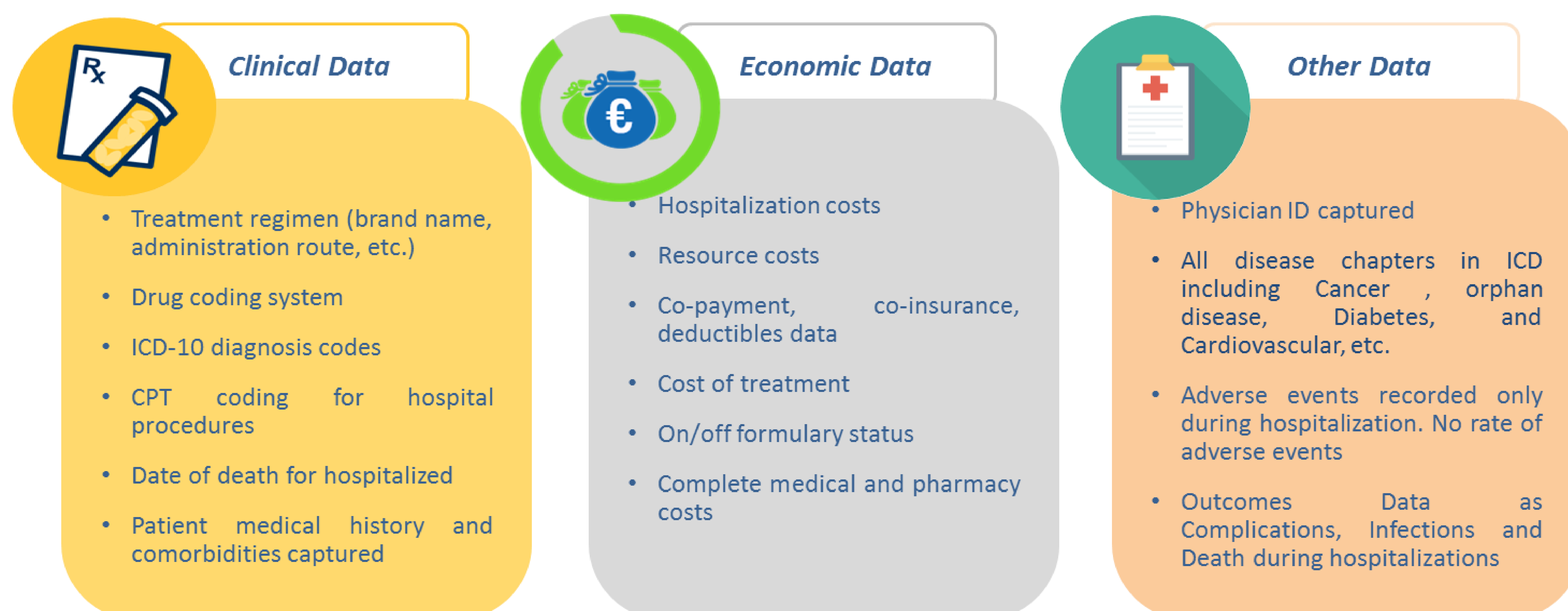
FIGURE 2

12 countries in the Middle East and Africa

Lebanon, Ivory Coast, Syria, Saudi Arabia, Kuwait, Qatar, UAE, Bahrain, Jordan, Palestine, Egypt, and Nigeria



FIGURE 3



CONCLUSION

GlobeMed database provides robust source of Real World Data. The collaboration of CCHO, GlobeMed, and ISSP (USJ) expertise will allow to fill data gaps and to leverage data-driven results in health economic modeling for the MENA region.